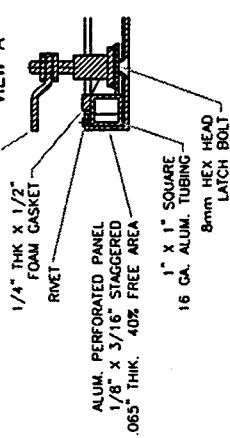
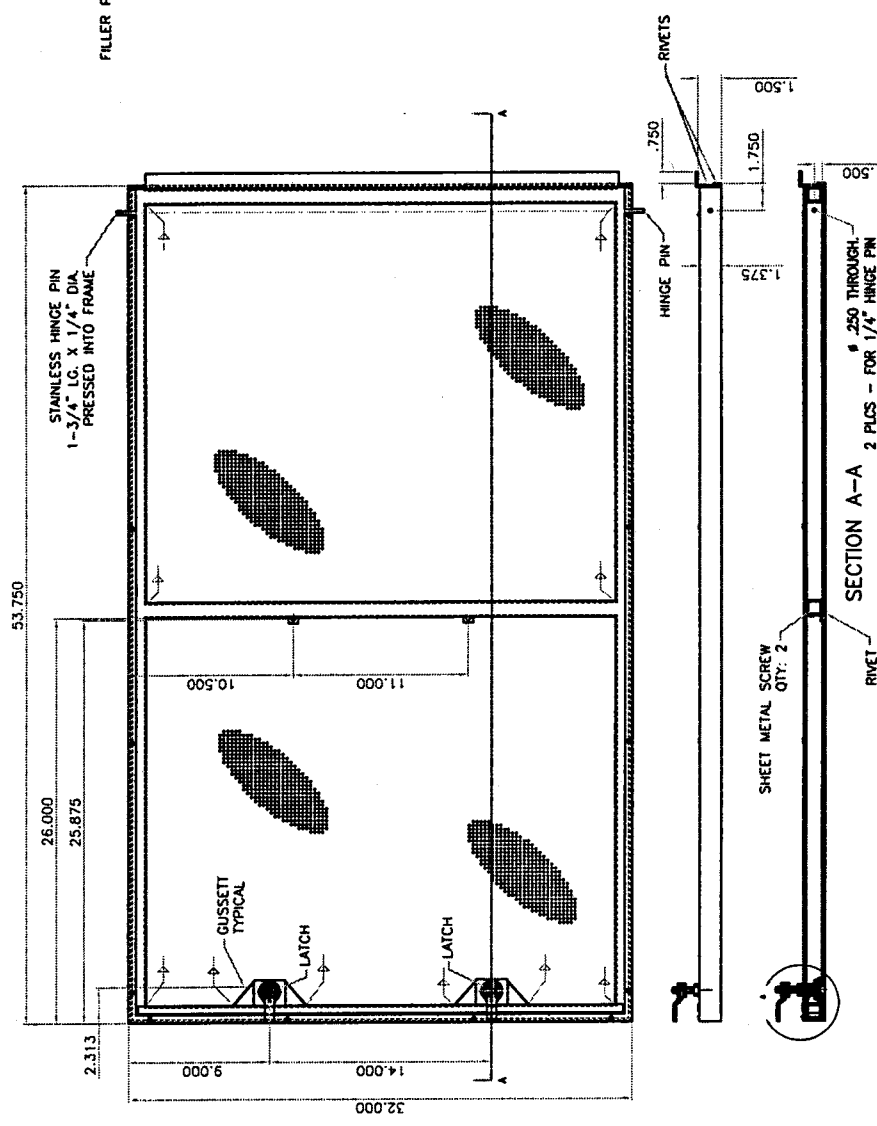


.5X SCALE

2X SCALE  
VIEW A

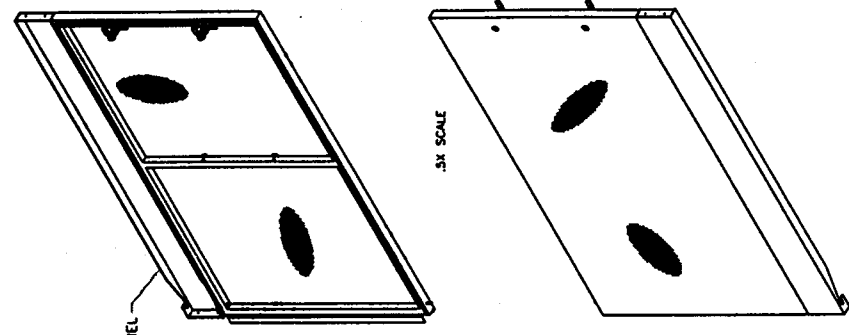


1/4" THK X 1/2" SQ. FOAM GASKET  
RIVET  
1" X 1" SQUARE ALUM. TUBING  
8mm HEX HEAD LATCH BOLT  
LATCH BOLT



**MATERIALS:**

PERF TYPE = ALUMINUM THICKNESS = .063 FINISH = POLYESTER POWDER COAT PAINTS = 1/8" DIA X 3/16" STAGGERED	PAINT COLOR = TO MATCH PPC DURAMAR J3M9900-3 TYPE = POLYESTER POWDER COAT FRAME = POWDER COAT BLACK
FRAME TYPE = ALUMINUM WELDED AT JOINTS THICKNESS = .16 GA. TUBING SIZE = 1" X 1" SEAL = PSA 1 SIDE 1/4" X 1/2" FOAM GASKET	HINGE PINS TYPE = STAINLESS DIA = 1-3/4" LG X 1/4" DIA. PRESSED INTO FRAME
LATCHES TYPE = 1/2" COMPRESSOR, 8 MM HEX HEAD DIA = 1/2" CAL. CO. ES-18-15 COLOR = BLACK	FILLER PANELS COLOR = TO MATCH PPC DURAMAR J3M9900-3 TYPE = POLYESTER POWDER COAT THICKNESS = .063 MATCHED PER DRAWING



.5X SCALE

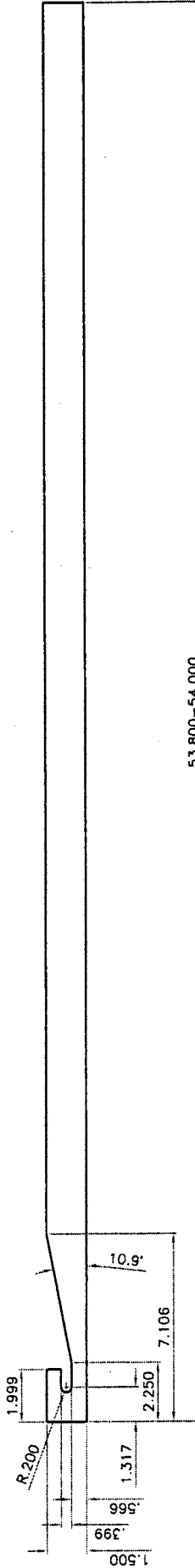
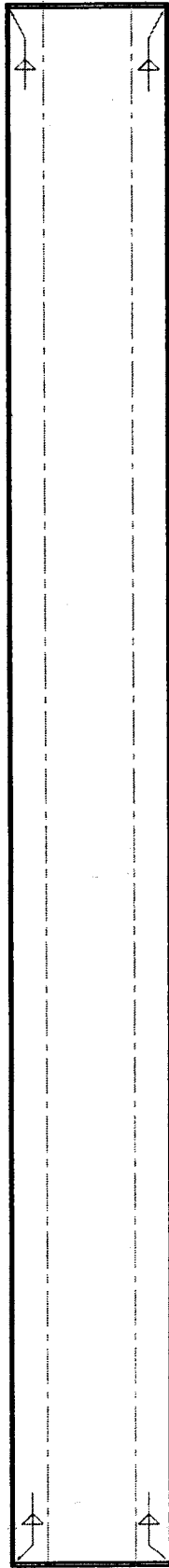
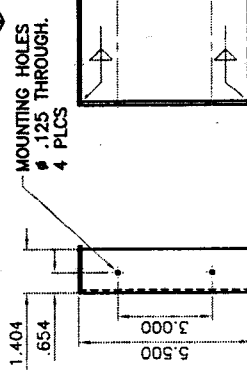
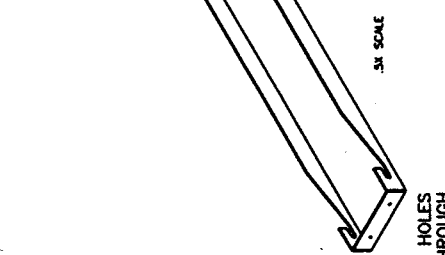
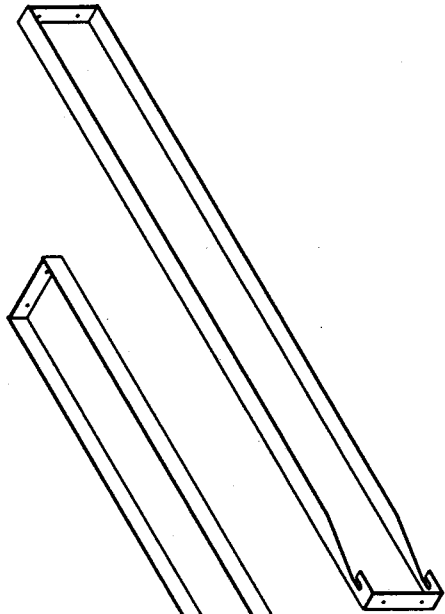
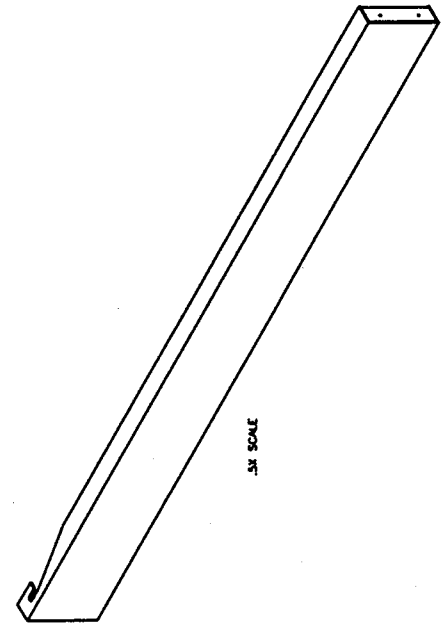
FILLER PANEL

**UNITED ENERTECH**  
3150 WASHINGTON BLVD. #300  
FARMINGDALE, NY 11737  
1-212-466-7715

DESIGNED BY: [ ]  
DRAWN BY: [ ]  
CHECKED BY: [ ]  
APPROVED BY: [ ]  
REV. DATE: 3-14-81  
REV. NO.: 1

PROJECT NO.: [ ]  
CONTRACTOR: [ ]  
SUBMITTED BY: T. F. Meilo Inc.

JOB NAME: GENERAL ELECTRIC 3077A SCREWS  
LOCATION: FARMINGDALE, CT



53.800-54.000

1.500

**MATERIALS:**

FILLER PANELS  
 TYPE - POLYESTER POWDER COAT  
 THICKNESS - .01"  
 NOTCHED PER DRAWING

DESIGNED BY: GUYTON, ELECTRIC, 2077A S.W. 22ND ST., MIAMI, FL 33135  
 DRAWN BY: J.P.  
 CHECKED BY: J.P.  
 APPROVED BY: I. F. Melio Inc.

**UNITED ENERTECH**  
 3180 S. W. 22ND ST. MIAMI, FL 33135  
 1-407-888-7715

DATE: 2-14-81  
 SHEET NO: 1  
 TOTAL SHEETS: 1