

**MODEL XAC-6 / XAC-9**

**12" [305mm] DEEP ACOUSTICAL LOUVERS**

**STANDARD CONSTRUCTION:**

**Frame:** 12" [305mm] Deep x 18 gauge galvanized steel

**Blade (air side):** 18 gauge galvanized steel

**Blade (noise side):** 20 gauge galvanized perforated steel

**Sound Absorber:** Advanced Microfibers composed of Polyester and Polyolefin

**Screen:** 0.50" x 0.050" [12.70mm x 1.27mm] flattened aluminum screen mounted in removable frame.

**Minimum Louver Size:** XAC-6 12"w x 18"h [305mm x 457mm]  
XAC-9 12"w x 22"h [305mm x 559mm]

**Maximum Louver Size:** 48"w x 120"h [1219mm x 3048mm]  
Louvers more than 48"w [1219mm] are built in mult. sections

**OPTIONS:**

- Flanged Frame (1.50" std.) [38mm]
- Custom Flange (1", 2", or 3") [25mm, 51mm, or 76mm]
- Extended Sill
- Insect Screen (Other Screens Available, See Screen Page)
- Filter Racks (no screen)
- Security Bars
- Hinged Sub Frame
- Welded Construction
- Blank-off, Steel, non-insulated, no screen, non-removeable
- Blank-off, Steel, non-insulated, with bird screen or insect screen
- Blank-off, Steel, insulated double wall, with bird screen, removable
- Blank-off, Steel, insulated double wall, no screen, non-removeable
- Aluminum Construction
- 304 Stainless Steel Const.     316 Stainless Steel Const.

**Available Finishes:**

- Durable Polyester Powder (AAMA 2604)
- Epoxy Powder
- Zinc Rich Gray Primer

**Model XAC-9**

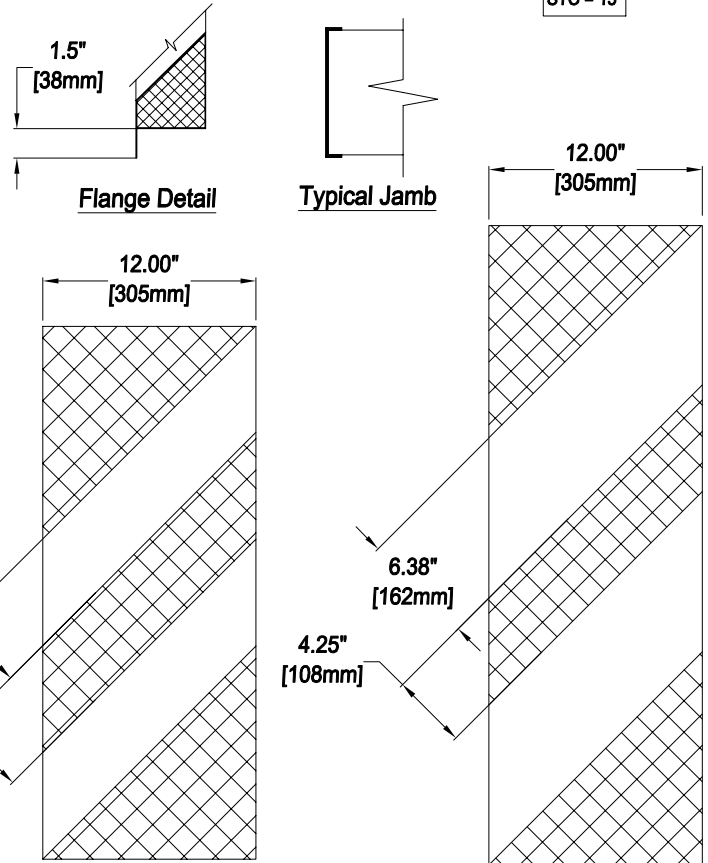
Acoustical Performance Certified data by Riverbank Acoustical Laboratories

Selected 1/3 Octave Band Center Frequency HZ	125	250	500	1000	2000	4000
Transmission Loss in Decibels	7	6	9	12	12	10
Free Field Noise Reduction	13	12	15	18	18	16
STC = 11						

**Model XAC-6**

Acoustical Performance Certified data by Riverbank Acoustical Laboratories

Selected 1/3 Octave Band Center Frequency HZ	125	250	500	1000	2000	4000
Transmission Loss in Decibels	8	8	13	17	16	12
Free Field Noise Reduction	14	14	19	23	22	18
STC = 15						



**Model XAC-6**

FREE AREA: 26% (based on size 48" x 48") [1219mm x 1219mm]

**Model XAC-9**

FREE AREA: 32.4% (based on size 48" x 48") [1219mm x 1219mm]

\*Width and Height dimensions are approximately 1/4" [6.35mm] under listed size.

Due to continuing research, United Enertech reserves the right to change specifications without notice.



3005 South Hickory Street  
Chattanooga, Tennessee 37407  
Tel: (423) 698-7715  
Fax: (423) 698-6629  
www.unitedenertech.com

**MODEL XAC-6 & 9 (Straight Blade 12" [305mm] Deep Acoustical Louvers)**

DRAWN BY: MHM	DATE: 4-22-10	REV. DATE: 4-24-13	REV. NO. 2	APPROVED BY: BGT	DWG. NO.: A-38
------------------	------------------	-----------------------	---------------	---------------------	-------------------