

**MODEL ES-EL-6**

**6" [152mm] Aluminum Equipment Screen**

**STANDARD CONSTRUCTION:**

**FRAME:** 2" x 2" x 0.25" [51mm x 51mm x 6.35mm]thk. angle (6063-T5 Extruded)

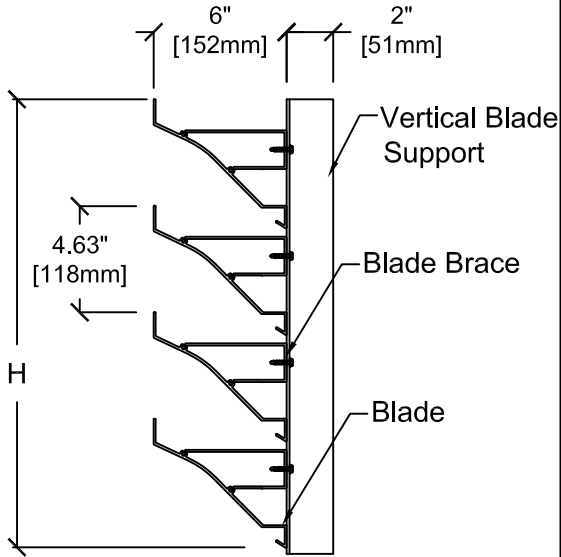
**BLADES:** 0.110" [2.79mm] thk., 6063-T5 Extruded Aluminum

**FINISH:** Mill

**MAX. SINGLE SECTION:** 84"w x 120"h or 120"w x 84"h [2134mm x 3048mm or 3048mm x 2134mm]

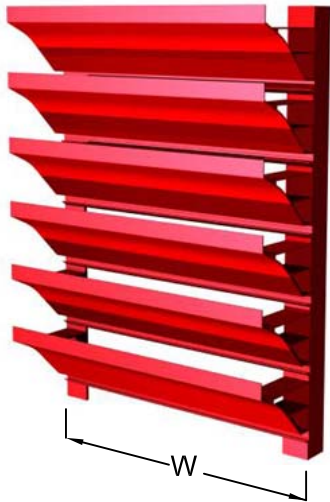
**MIN. SECTION SIZE:** 12"w x 12"h [305mm x 305mm]

\*Panels over 48" [1219mm] wide will have a 2" x 2" x 0.25" [51mm x 51mm x 6.35mm] aluminum angle with blade supports mid-span.

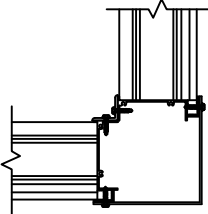


**AVAILABLE FINISHES:**

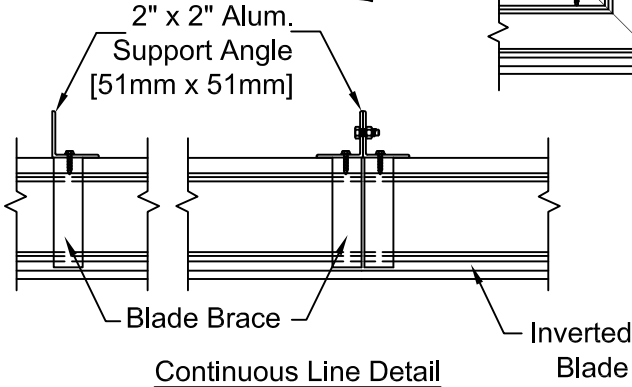
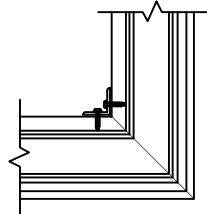
- Durable Polyester (AAMA 2604)
- 70% PVDF Fluoropolymer (AAMA 2605)
- Yellow Primer
- Clear Anodize
- Dark Bronze Anodize



**Box Corner Detail (Standard)**



**Mitered Corner Detail (Optional)**



Due to continuing research, United Enerotech reserves the right to change specifications without notice.

	3005 South Hickory Street Chattanooga, Tennessee 37407 Tel: (423) 698-7715 Fax: (423) 698-6629 www.unitedenerotech.com					
	<p><b>MODEL ES-EL-6 (6" [152mm] Aluminum Equipment Screen)</b></p>					
DRAWN BY: MHM	DATE: 3-12-10	REV. DATE: 5-6-13	REV. NO.: 1	APPROVED BY: BGT	DWG. NO.: <b>A-48</b>	

# Model ES-EL-6 Typical Installation Details

