

THINLINE OPPOSED / PARALLEL BLADE DAMPER

Suggested Specifications:

Furnish and install at location shown on drawing or in accordance with schedules dampers meeting the following specifications: Rectangular damper shall have 0.125 [3.18mm] streamline extruded aluminum blades and 3" [76mm] wide, 0.081 [2.06mm] extruded aluminum frame. Damper to have thrust bushings and meet the low pressure drop equal to United Energetech

MODEL CD-75 or CD-76

Standard Construction:

Frame: 0.081 [2.06mm] Extruded Aluminum

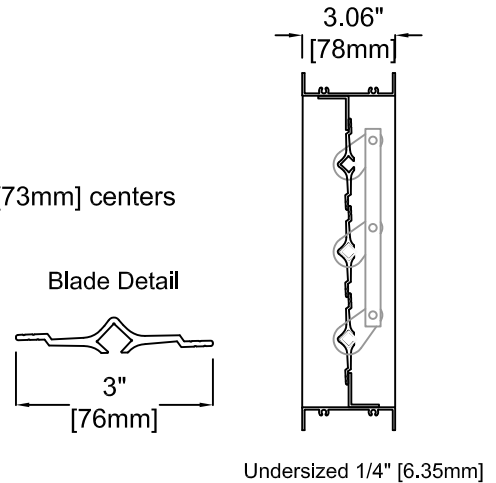
Blade: Streamlined 0.125 [3.18mm] Extruded Aluminum, 2.875" [73mm] centers

Bearing: Bronze Oilite

Linkage: Concealed in frame

Axles: 3/8" [9.35mm] Square Zinc Plated with thrust bushings

Control Shaft: 1/2" x 6" [13mm x 152mm] long outboard support bearing supplied with all single section dampers for field mounted actuators.



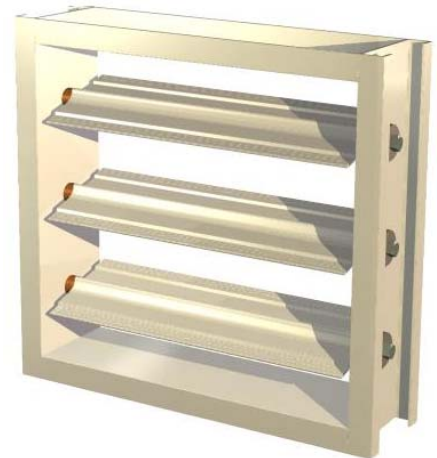
Minimum Size: 6"w x 4"h [152mm x 102mm]
 7" [179mm] and under single blade
 Maximum Size: 48"w x 48"h [1219mm x 1219mm]
 (single section)

Options:

- Blade Seals PVC (175°F [79° C])
- Blade Seals Silicone (400°F [204°C])
- Compression Jamb Seals (stainless steel)
- Side Plates (End Flange)
- Hand Quadrant
- Factory Installed Pneumatic or Electric Actuators (see cat. sheet H-1)
- Stand Off Bracket, 2" [51mm]

AVAILABLE FINISHES:

- Epoxy Powder
- Heresite Coat



MODEL CD-76 (parallel blade) shown

Job Name:	<input type="checkbox"/> MODEL CD-75 (opposed blade)		
Location:	<input type="checkbox"/> MODEL CD-76 (parallel blade)		
Architect:	DRAWN BY: CLJ	DATE: 5-16-11	REV. DATE: 12-23-13
Engineer:	REV. NO. 3	APPROVED BY: SDC	DWG. NO.: A-2a
Contractor:			