

SUBMITTAL DATA

MODEL D-HV-9

HIGH PERFORMANCE FIXED LOUVER

MIAMI-DADE COUNTY, FLORIDA NOTICE OF ACCEPTANCE #: 21-0216.02
 FLORIDA BUILDING CODE PRODUCT APPROVAL #: 38775.1

- D-HV-9 Meets the following requirements:
- AMCA 540 & AMCA 550 Listed
 - Florida Product Approval
 - AMCA 500-L Pressure Drop Tested
 - ASTM E330 & ASTM E1886

STANDARD CONSTRUCTION:

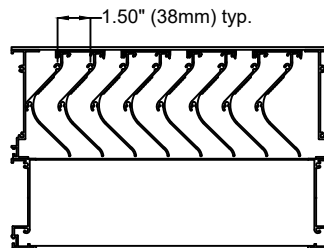
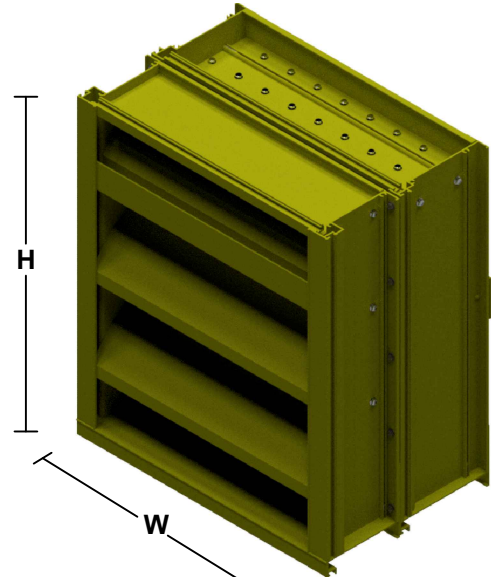
- Front Frame:** .081 Extruded Aluminum, 4.16" Deep
Front Blade: .081 Extruded Aluminum positioned on a 40° angle on approximately 4.625" centers
Rear Frame: .081 Extruded Aluminum, 5.1" Deep
Rear Blade: .063 Extruded Aluminum positioned on approximately 1.50" centers
Birdscreen: 0.50" x .050" Flattened Aluminum in removable frame. Screen is mounted as standard on inside (rear) as looking from exterior of building.
Finish: Mill Aluminum (Std.)
Minimum Size: 12"w x 12"h
Maximum Single Section: 72"w x 120"h
 Unlimited Multisection w x 120"h

OPTIONS:

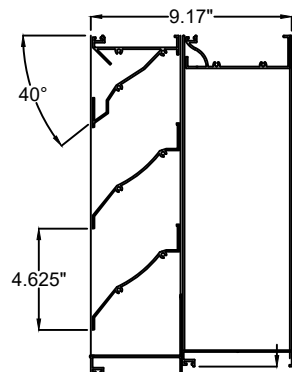
- Flanged Frame (1.50" [38mm] std.)
- Custom Flange (1", 2", or 3") [25mm, 51mm, or 76mm]
- Extended Sill
- Insect Screen (Other Screens Available, See Screen Page)
- Filter Racks (no screen)
- Security Bars
- Blank-off, Alum., non-insulated, no screen, non-removable
- Blank-off, Alum., non-insulated, with bird screen or insect screen
- Blank-off, Alum., insulated double wall, with bird screen, removable
- Blank-off, Alum., insulated double wall, no screen, non-removable

AVAILABLE FINISHES:

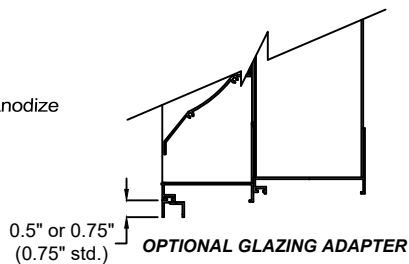
- Durable Polyester (AAMA 2604)
- 70% PVDF Fluoropolymer (AAMA 2605)
- Yellow Primer
- Clear Anodize
- Dark Bronze Anodize



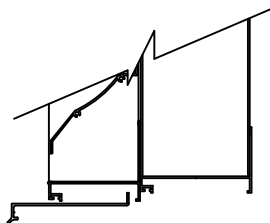
PLAN VIEW



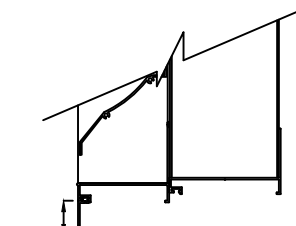
SECTION VIEW



OPTIONAL GLAZING ADAPTER



OPTIONAL EXTENDED SILL



OPTIONAL FLANGE
(except R_ Shapes, 1" optional std)



HIGH VELOCITY RAIN RESISTANT WITH BLADES FULLY OPEN AND IMPACT RESISTANT LOUVER Enhanced Protection Level E
See www.AMCA.org for all certified or listed products

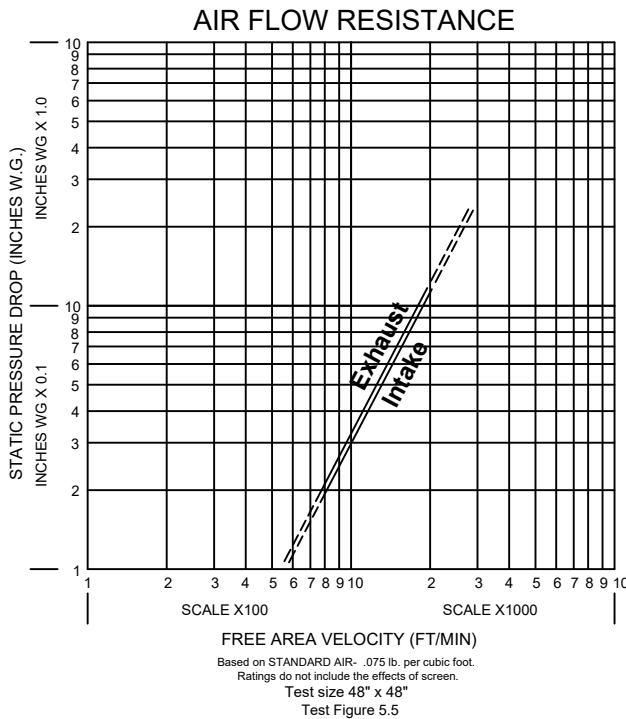
This label does not signify AMCA airflow performance certification.

*Width and Height dimensions are approximately 1/4" under listed size.

| | | | | |
|-----------------|-------------------|---|---------------|---------------------------|
| | | 3005 South Hickory Street Chattanooga, Tennessee 37407 Tel: (423) 698-7715 Fax: (423) 698-6629 www.unitedenertech.com | | |
| | | MODEL D-HV-9 (Dual Blade 9" Wind-Driven Rain Louver) | | |
| DRAWN BY: VD | DATE: May 2021 | REV. DATE: | REV. NO. 0 | DWG. NO.: A-23b |

Due to continuing research, United Enertech reserves the right to change specifications without notice.

Model D-HV-9 Louver Performance Data



D-HV-9 Specifications

Furnish and install louver as hereinafter specified where shown on plans or as described in schedules. Louver shall be stationary type with horizontal rain resistant style blades positioned on approximately 1.5" centers, in front of vertical wind driven rain blades placed on approximately 1.5" centers, both within a 9.17" deep frame. Horizontal louver frame material to be 0.125" thick 6063-T5 extruded aluminum, and horizontal louver blade material to be .081" thick 6063-T5 extruded aluminum. Vertical louver frame material to be .081" thick 6063-T5 extruded aluminum, and vertical louver blade material to be 0.07" thick 6063-T5 extruded aluminum. Sections up to maximum of 72"w x 120"h shall withstand wind loading of +/-150 lbs/sq.ft.. Louver shall meet the performance requirements established by the AMCA 500L test procedure and shall be licensed to bear the AMCA certified rating seal for air performance. Louver shall have a minimum free area of 7.53 sq. ft. based on the standard 48"w x 48"h test specimen. Louver shall have a maximum static pressure drop of 0.72"(exhaust) & 0.75"(intake) water gage based on 1000 FPM free area intake velocity. Louver shall be AMCA listed for AMCA 550 High Velocity Rain Resistance and AMCA 540 Impact resistance (Basic Protection).

| Louver Height Inches | D-HV-9 FREE AREA IN SQ. FT. | | | | | | | | | | | Louver Height Inches |
|----------------------|-----------------------------|------|-------|-------|-------|-------|-------------|-------|-------|-------|-------|----------------------|
| | Width - Inches | | | | | | | | | | | |
| | 12 | 18 | 24 | 30 | 36 | 42 | 48 | 54 | 60 | 66 | 72 | |
| 12 | 0.30 | 0.55 | 0.76 | 0.96 | 1.17 | 1.38 | 1.59 | 1.80 | 2.01 | 2.21 | 2.42 | 12 |
| 18 | 0.59 | 0.95 | 1.32 | 1.68 | 2.05 | 2.41 | 2.77 | 3.14 | 3.50 | 3.86 | 4.23 | 18 |
| 24 | 0.75 | 1.21 | 1.68 | 2.14 | 2.60 | 3.06 | 3.52 | 3.99 | 4.45 | 4.91 | 5.37 | 24 |
| 30 | 0.99 | 1.61 | 2.22 | 2.83 | 3.44 | 4.06 | 4.67 | 5.28 | 5.89 | 6.51 | 7.12 | 30 |
| 36 | 1.22 | 1.97 | 2.73 | 3.48 | 4.23 | 4.98 | 5.73 | 6.49 | 7.24 | 7.99 | 8.74 | 36 |
| 42 | 1.47 | 2.38 | 3.29 | 4.20 | 5.10 | 6.01 | 6.92 | 7.83 | 8.73 | 9.64 | 10.55 | 42 |
| 48 | 1.60 | 2.59 | 3.58 | 4.57 | 5.55 | 6.54 | 7.53 | 8.51 | 9.50 | 10.49 | 11.47 | 48 |
| 54 | 1.94 | 3.13 | 4.32 | 5.51 | 6.71 | 7.90 | 9.09 | 10.28 | 11.48 | 12.67 | 13.86 | 54 |
| 60 | 2.16 | 3.50 | 4.83 | 6.16 | 7.49 | 8.83 | 10.16 | 11.49 | 12.82 | 14.15 | 15.49 | 60 |
| 66 | 2.42 | 3.90 | 5.39 | 6.88 | 8.37 | 9.85 | 11.34 | 12.83 | 14.32 | 15.80 | 17.29 | 66 |
| 72 | 2.64 | 4.26 | 5.88 | 7.50 | 9.12 | 10.75 | 12.37 | 13.99 | 15.61 | 17.23 | 18.86 | 72 |
| 78 | 2.88 | 4.65 | 6.42 | 8.20 | 9.97 | 11.74 | 13.51 | 15.29 | 17.06 | 18.83 | 20.60 | 78 |
| 84 | 3.11 | 5.02 | 6.93 | 8.84 | 10.76 | 12.67 | 14.58 | 16.49 | 18.40 | 20.32 | 22.23 | 84 |
| 90 | 3.36 | 5.43 | 7.49 | 9.56 | 11.63 | 13.70 | 15.76 | 17.83 | 19.90 | 21.97 | 24.03 | 90 |
| 96 | 3.58 | 5.78 | 7.98 | 10.18 | 12.39 | 14.59 | 16.79 | 18.99 | 21.20 | 23.40 | 25.60 | 96 |
| 102 | 3.82 | 6.17 | 8.53 | 10.88 | 13.23 | 15.58 | 17.94 | 20.29 | 22.64 | 24.99 | 27.35 | 102 |
| 108 | 4.05 | 6.54 | 9.03 | 11.53 | 14.02 | 16.51 | 19.00 | 21.49 | 23.99 | 26.48 | 28.97 | 108 |
| 114 | 4.30 | 6.95 | 9.60 | 12.24 | 14.89 | 17.54 | 20.19 | 22.83 | 25.48 | 28.13 | 30.78 | 114 |
| 120 | 4.52 | 7.30 | 10.09 | 12.87 | 15.65 | 18.43 | 21.21 | 24.00 | 26.78 | 29.56 | 32.34 | 120 |



HIGH VELOCITY RAIN RESISTANT WITH BLADES FULLY OPEN AND IMPACT RESISTANT LOUVER
Enhanced Protection Level E

See www.AMCA.org for all certified or listed products

This label does not signify AMCA airflow performance certification.



United Enertech Corporation certifies that the D-HV-9 is licensed to bear the AMCA Seal. The ratings shown are based on tests and procedures performed in accordance with AMCA publication 511 and comply with the requirements of the AMCA Certified Ratings Program. The AMCA Certified Rating Seal applies to air performance ratings.

United Enertech certifies that the D-HV-9 shown herein is approved to bear the AMCA Listing Label. The ratings shown are based on tests and procedures performed in accordance with AMCA Publications and comply with the requirements of the AMCA Listing Label Program. The AMCA Listed Label applies to Wind Borne Debris Impact Resistant Louvers and High Velocity Rain Resistant Louvers