



# MODEL FD FIRE DAMPER with MODEL MS w/ MICROSWITCH

U.L. 555 CLASSIFIED 1-1/2 AND 3 HOURS  
FOR STATUS CONTROL OR FAN SHUT OFF

## Application and Design

The Model MS, Microswitch, is UL Classified to be installed on any United Enertech Fire Dampers 1-1/2 or 3 Hour Rated. The Microswitch Package is used to remotely indicate if the damper is open or closed and can be wired through a relay to control fan operation.

## Standard Construction

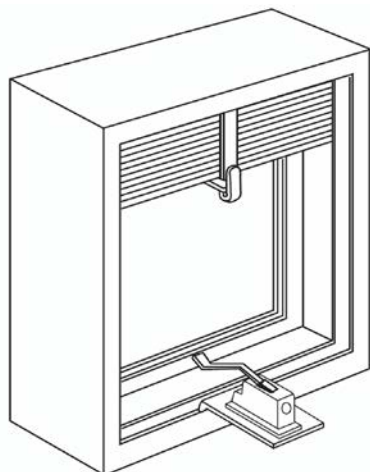
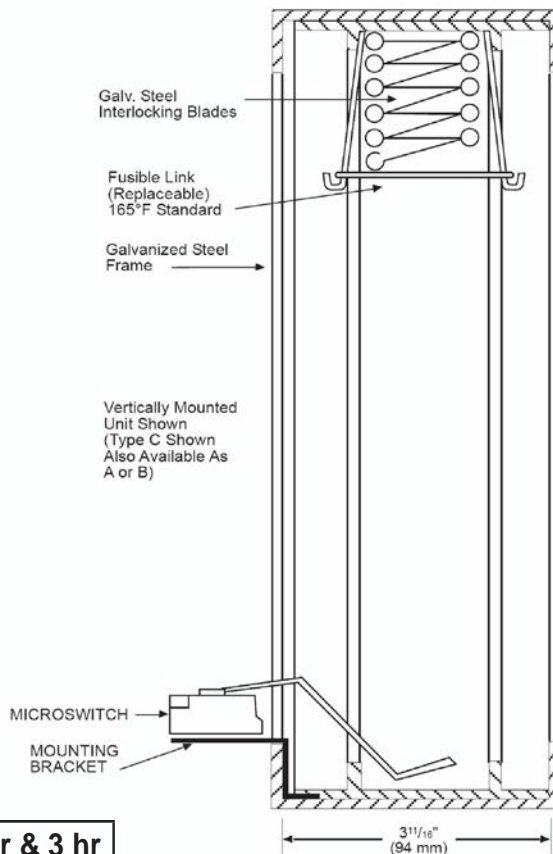
**Frame:** Roll formed Frame - Galvanized Steel

**Blades:** 16 Ga. Galvanized Steel

**Fusible Link - UL-33:** UL Listed 165°F (Standard), 212°F (Optional)

Model MS meets or complies with the following as a fire damper:

- All major building codes, including IBC/ICC International Code
- UL 555 Listing - File #R25410
- ULC S112
- NFPA - 90A, 80



Requirements vary for each job. Please specify type of switch required. 15 amp. single pole double throw switch shown.

### Standard Sizes (duct) 1-1/2 hr & 3 hr

Min. Size	Max. Size
8"W X 8"H 203mm X 203mm	48"W X 48"H 1219mm X 1219mm

### Options:

- Narrow 2-3/16" (56mm) or
- 1-1/2" (38.4mm) frame
- Electro Thermal Links
- Adjustable Blade Stack for Combination
- Solenoid Release
- Mounting:
  - Horizontal
  - Vertical

Job Name:
Location:
Architect:
Engineer:
Contractor:

<input type="checkbox"/> <b>MODEL MS</b>		
DRAWN BY: MAB	DATE: 11-07-07	REV. DATE: 07-18-08
REV. NO.: 4	APPROVED BY: SDC	DWG. NO.: <b>A-33</b>